

INFRASTRUCTURE FACILITIES

Optometry Department is well equipped with following infrastructure.

- **Eye OPD**

Division of Optometry , School of Medical and Allied Sciences started eye OPD in the year 2018. The facilities include comprehensive eye examination, diagnostic evaluation, binocular vision assessment etc



EYE OPD



Consultant Room Eye OPD

Facilities at Eye OPD

Lab Infrastructure

3 state of the art laboratories for students training. in
Optometry Glimpse of the labs Infrastructure



Optometry Lab 526



Optometry Lab



Poster Presentation



Keratometry

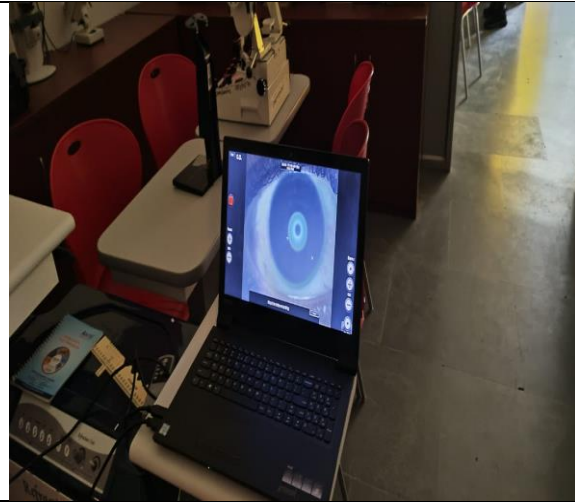


Snellen's chart

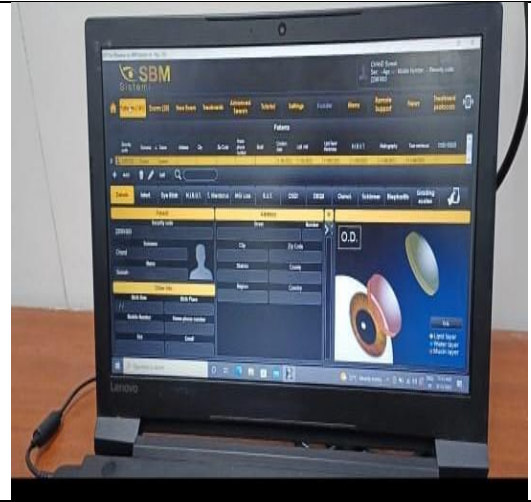


chair unit

Snellen`s Drum



Chair Unit



Detailed Tear film assessment

Ocular Surface Analyzer

	
	
<p>Library and IT support</p>	