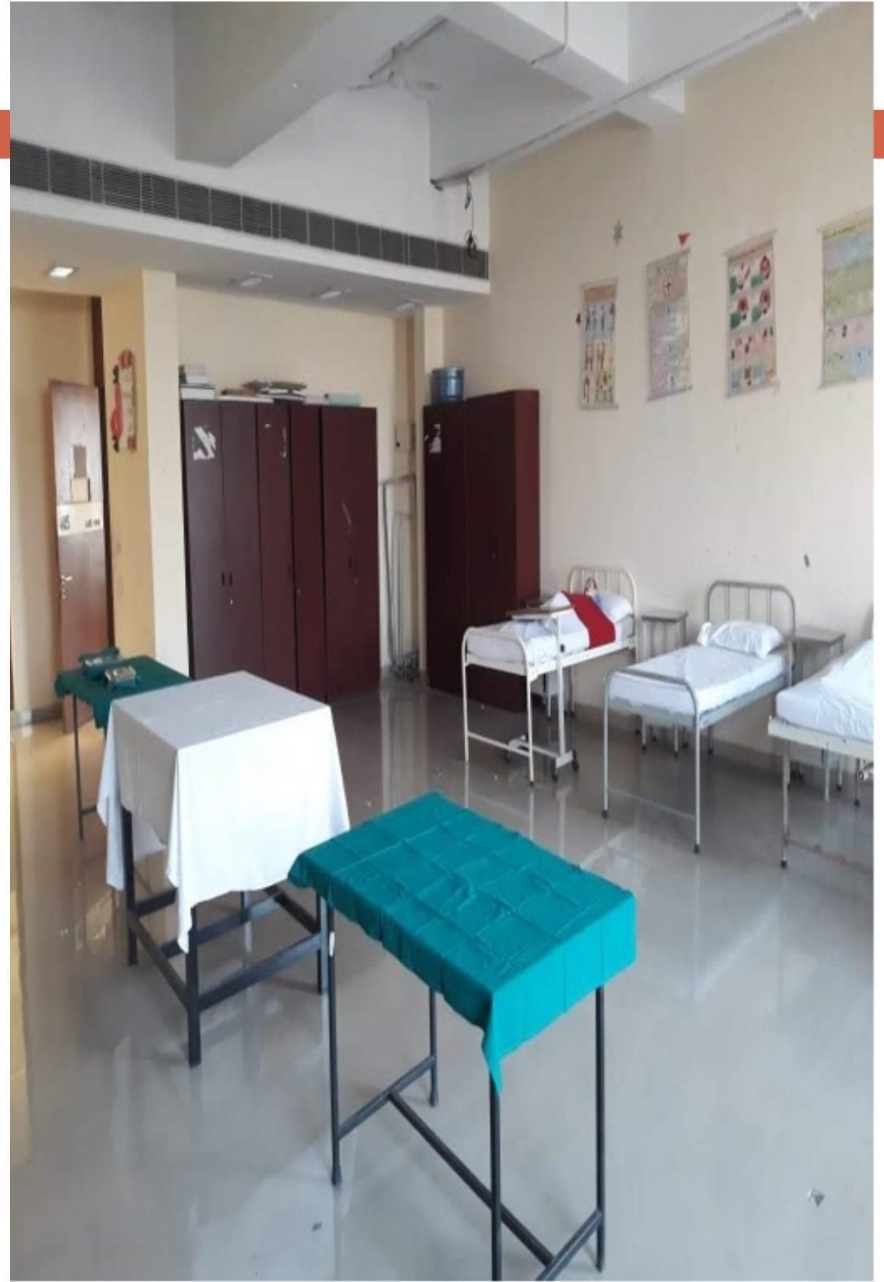


LABORATORY FACILITIES FOR SKILL ENHANCEMENT



NURSING FOUNDATION LAB





NUTRITION LAB



height and weight that applies
to adult men and women

METRIC MEASUREMENTS

• Weight in kilogram (kg) • Height in meter (m)

$$\text{BMI} = \text{BODY MASS (KG)} / [\text{HEIGHT (M)}]^2$$

CATEGORY	BMI range - kg/m ²
Underweight	< 18.5
Normal Range	18.5 - 22.9
Overweight - At Risk	23 - 24.9
Overweight - Moderately Obese	25 - 29.9
Overweight - Severely Obese	≥ 30

A	BETH-CAROTENE	
A1	ERGOCALCEROL	
D	ERGOCALCEROL	
E	TOCOPHEROL	
K	PHYLLOQUINONE	
K1	PHYLLOQUINONE	
K2	ERUGAMINE	
K3	ERUGAMINE	
K4	ERUGAMINE	
K5	ERUGAMINE	
K6	ERUGAMINE	
K7	ERUGAMINE	
K8	ERUGAMINE	
K9	ERUGAMINE	
K10	ERUGAMINE	
K11	ERUGAMINE	
K12	ERUGAMINE	
C	ASCORBIC ACID	

For soluble vitamins are stored in the form, excess intake results in hyperuricemia, whereas water soluble vitamins are not stored, excess is excreted, defect manifests rapidly as there is no storage.





Maternity and child health nursing





AV AIDS LAB



ANATOMY LAB







COMMUNITY HEALTH NURSING

LAB





COMPUTER LAB

