



**GALGOTIAS
UNIVERSITY**



**PLACEMENT
BROCHURE**

2017-18

Introduction: Career Planning & Development Division

Career Planning & Development Division (CPDD) looks after corporate relations, career guidance and placements of the students. It plays a major role in liaising with different industrial establishments and manufacturing units for curriculum based training, placements, guest lectures and skill development programs.

Career Planning & Development Division is committed to provide ample opportunities to the graduate and post-graduate students so that they may secure employment in multi-national companies and other reputed organizations. CPDD doesn't only provide placement opportunities but it also lays emphasis to prepare the students for coping up with the current challenges of the industry by making them aware about the recent market trends and latest technologies; eminent experts from different companies are invited to the campus on regular basis who can share their experiences and knowledge with the students.

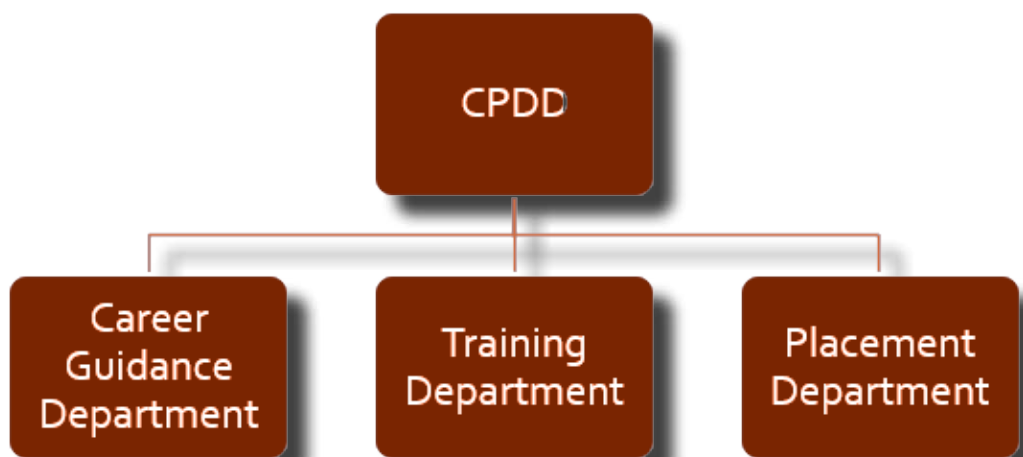
CPDD is rigorously involved in collaborating with leading organizations for conducting internships, placements and training programs. It acts as an interface among students, alumni, and the employment community and bridges the gap between industry and academia.

CPDD Structure and Functions:

Career Planning & Development Division (CPDD) has been divided in three different sub units to serve the purpose, the sub units are -

- a) Career Guidance Department.
- b) Training Department.
- c) Placement Department

Organizational Chart of CPDD



a) Career Guidance Dept

Career Guidance Department with the team of faculty members from each department looks into effective career guidance services to the students including counseling for higher studies like GRE, GATE, CAT etc. Also, AMCAT exam is conducted every year for the students of 5th and 7th semester so that their evaluation may be gauged and necessary guidance may be provided on basis of their sector fitment. Roles and Responsibilities.

Roles and Responsibilities

- To provide educational and vocational/career matters to the students by holding counseling sessions.
- To provide pre-placement guidance and counselling for higher studies.
- To make necessary arrangements for the students in order to help them formulate good decisions with regard to their future steps relating to education or career.
- Helping students to understand that career management is a lifelong process.
- Helping the students to understand how technological trends play a major role in career management.
- Promoting the independence and self-confidence of the students.
- Increasing awareness of opportunities and options after their graduation in term of higher studies and career.

b) Training Department: School of Lifelong Learning

The Institute provides Personality Development training to its students, which is a part of their regular curriculum. Cardinal to obtaining jobs, topics such as Soft Skills Development, Aptitude and right Attitude build-up, communication skills are delivered through four hours a week session.

- The School of Lifelong Learning (SLLL) is dedicatedly grooming the students in multidimensional areas, enabling them to effortlessly face the challenges of the corporate world and evolve individually they graduate from the campus.
- For this purpose The School of Lifelong Learning plans various activities such as Presentation Skills, Group Discussion, Workshops, Debate Competition, Job Fair etc regularly.
- For the VIth semester students, SLLL runs a specific industry oriented program – Campus to Corporate.
- College has the best trainers from the industry to train the students

b) Placement Department: School of Lifelong Learning

CPDD is rigorously involved in collaborating with leading organizations in organizing internship and placement activities for the students. It acts as an interface among students, alumni and employment community and bridges the gap between industry and academia.

Roles and Responsibilities

- To establish strong industry institution interface.
- To establish MoUs with world class companies regarding academic partnership and placements.
- Providing Industrial linkages to both the students and the faculty
- Encourage Industries to visit the institution for familiarization
- To Conduct Industrial visits for students.
- To arrange corporate-student engagement activities
- To generate in-campus and off-campus job opportunities for the students

Team Members

Name	Email ID
Manisha Chaudhry – Director CPDD	director_cpdd@galgotiasuniversity.edu.in
Manish Pant – Sr Manager	manish.pant@galgotiasuniversity.edu.in
Khushandra Sharma – Sr Manager	k.sharma@galgotiasuniversity.edu.in
Rachna Agnihotri – Manager	rachna.agnihotri@galgotiasuniversity.edu.in
Illa Singh – TPO	illa.singh@galgotiasuniversity.edu.in



2017-18

PROGRAM	NO. OF TOTAL OFFERS	NO. OF UNIQUE OFFERS
B TECH	867	758
MBA DUAL	246	147
MBA -FM (SFC)	6	5
MBA INTEGRATED	55	35
BBA, BCOM	187	169
BA(JMC), MA (JMC)	71	65
BA-LLB, BBA-LLB, LLB/ LLM	118	118
B.PHARM, M.PHARM	26	18
BSC -HM	20	20
BA, BSC-NURSING, B.ED	15	15
BSC, MSC	8	8



47%

Students Received Multiple Job Offers



18%

Students Received More than 03 Job Offers



40%

Students Placed in Day 1 of Placement

NUMBER OF COMPANIES VISITED for Palcement Batch 2017-18



Total Companies 400+
B TECH/MCA 257
MBA (DUAL) 280
MBA-FM 46
BBA 140
BMS 27
B COM 58
BA (JMC) 53
MA (JMC) 12
B.PHARM 12
M.PHARM 12
M.Sc 26
BBA LLB 37
B.SC. (HM) 12
B.SC.(FORENSIC) 13
BA 16
OTHERS {LLB, LLM, BSC (NURSING), M.SC(Math)}

SALARY PACKAGES OFFERED

Technical Courses

Highest CTC Offered **9.00** LPA

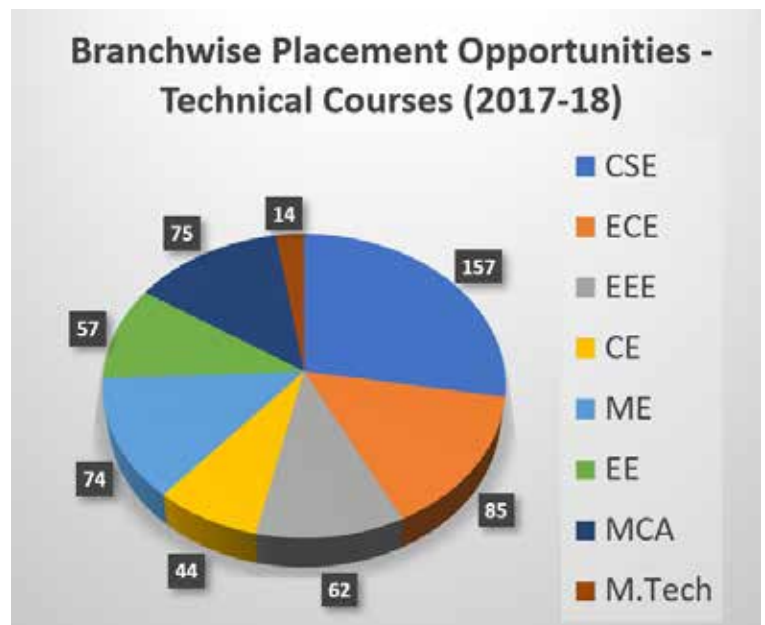
Average CTC **3.00** LPA

Non - Technical Courses

Highest CTC Offered **6.66** LPA

Technical Courses

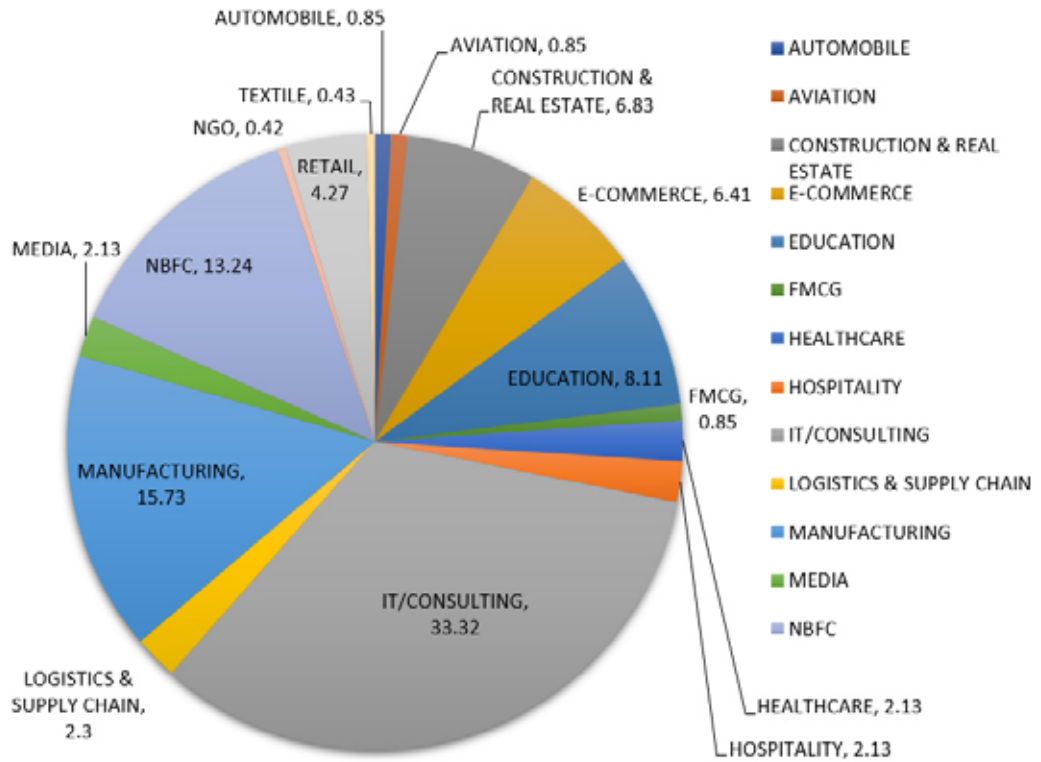
Function/Branch wise Split - Number of Companies



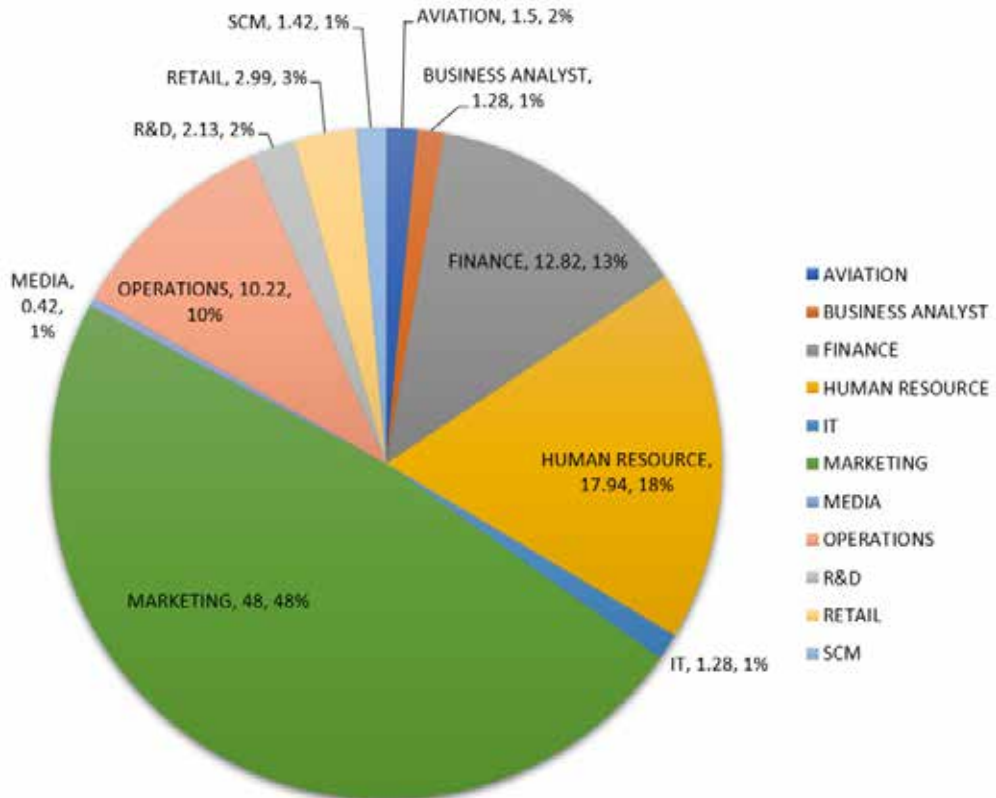
Representation shows number of companies participated during campus recruitment drives for 2016 batch students (Technical Courses)

MBA

SECTOR WISE PLACEMENTS - 2018 BATCH



FUNCTIONWISE PLACEMENTS - 2018 BATCH



B Tech/MCA

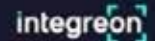
Major Recruiters



Accenture, Adroit Technical Services Pvt Ltd., Adroit Control Engineers, Agicent Technologies, Al Tair Inspection Services, Amazon, Amrapali Group, Ankur Lights, AonHewitt, Arabol Lubricants, Aricent, Aristocrate Gaming, Asahi India Glass Ltd., Bharti Airtel Ltd., Bizmerlin, Broadcom, Bygging India Ltd., Capital Via, Cheeg India, Chrome Infotech, Citrix Systems, Coca-cola, Cognizant, CSC, Cummins India, Cvent India, Deloitte, EIPL, Ericsson, EXL Services, Finao Technologies (i) Pvt.Ltd, GA Advisory, Genpact, Global Logic, Grapecity, HCL Technologies, Hercules Structural Systems, Hero Motocorp, Hettich India Pvt. Ltd., HPE, IBM GBS, Idea Cellular, Indian Navy, Infosys, Intelligrepe , IRIS Software, J.K. Cement, Josh Technologies, KPIT, Lafarge India Ltd., Lava International, Libsys Ltd., Mahindra & Mahindra Ltd., Metlife GOSC India, Mindtree Ltd., Mphasis, Nagarro, Navyug Infosolutions, NEC Technologies, Newgen Software Pvt. Ltd., NIIT, Nucleues Software, Oerlikon Graziano, Optimus Information Inc, Perfect Generators, PNB Housing Finance Ltd., Primefocus, Rudra Buildwell, RxLogix, Saint Gobain, Samsung R&D, SapientNitro, Shriram Transport Finance Company, Solarman Engg. Project (P) Ltd., Sopra Group, Spark Engg. Pvt. Ltd., Spreadtrum Communications India(P)Ltd., Symphony, Syntel, TCS, Tech Mahindra, Tega Industries, Tolexo, Torrent Power, Vivo Mobile Pvt. Ltd., Webkul Software Pvt. Ltd., Whirlpool India, Wildnet Technologies, Wipro Technologies, Yodlee, Zycus and many more

Non- Technical (Major Recruiters)

Major Recruiters



Placement Status 2017-18 Batch (Technical)

S.No.	Name of The Company	Sector	No. of placed students	Package
S.N	Company Name	Sector	B.Tech (GU)	Salary (In Rupees)
1	Infosys	IT	63	325000
2	Wipro Technologies	IT	42	330000
3	Maple Construction	Const	1	400000
4	Libsys	IT	1	450000
5	Bhilwara Infotech Ltd.	IT	8	220000
6	Code Maven	IT	12	300000
7	Optimus	IT	1	300000
8	Xceedance	IT	3	351000
9	Byjus (Think & Learn Pvt Ltd)	Education	8	900000
10	Maxtra Technologies Pvt Ltd.	IT	11	180000
11	Ksolves India Pvt. Ltd.	IT	2	240000
12	TechPerspect Software Pvt. Ltd.	IT	4	260000
13	Leewayhertz	IT	2	280000
14	Optra Automation Pvt. Ltd.	Automation	5	216000
15	Fluper Ltd	IT	4	180000
16	Deloitte	IT	2	400000
17	Cyber Group	IT	1	360000
18	IPNeeti	Mfg.	1	180000
19	Thots Labs	IT	1	400000
20	Velocity Software Solutions Pvt Ltd	IT	3	180000
21	Cognizant	IT	21	338005
22	IVEDA India	IT	1	240000
23	Naukri.com	Online	1	240000
24	Grappus	IT	1	450000
25	Daffodil Software	IT	1	300000
26	To the New	IT	5	375000
27	E2E Research Services Pvt Ltd	IT	1	200000
28	Gemini Solutions	IT	4	480000
29	Tanisha Systems	IT	3	180000
30	Ingenious e-Brain Solutions	IT	2	240000
31	A1 Fidelity Services Pvt. Ld.	IT	1	180000
32	Q.A. Infotech	IT	10	250000

33	TransWeb Educational Services Pvt Ltd	IT	9	300000
34	Shimuk Enterprises Pvt Ltd	CE	1	350000
35	Drishti Soft	IT	1	660000
36	Research Nester	Research	2	225000
37	Amazon	Online	6	197000
38	Sysmind LLC	IT	1	180000
39	Emerson Automation Solutions	ECE	1	369225
40	Pioneer-e-Solutions	IT	2	180000
41	Namekart	Education	3	600000
42	CVENT	IT	2	606505
43	Phronesis	IT	1	313000
44	Eastman Mettcast Ltd.	Mfg	1	180000
45	SNVA Ventures Pvt. Ltd.	IT	1	180000
46	Jaipur Mahua Tollway Pvt. Ltd.	Mfg	1	325560
47	EdWisor	IT	4	400000
48	Effectual Services	Patent	1	300000
49	Classplus	Education	2	500000
50	Appsquadz Technologies Pvt. Ltd.	IT	3	180000
51	Encoding Enhancers	IT	3	180000
52	Trishul Realcon Pvt. Ltd.	Const	1	180000
53	Multiplier Solutions	IT	1	400000
54	HSBC Software Development (India) Pvt. Ltd.	IT	1	700000
55	Ebizon Netinfo Pvt Ltd	IT	1	320000
56	Natrix Technology	IT	1	240000
57	Online24x7 India Pvt. Ltd	IT	6	216000
58	Metlife	Insurance	13	320000
59	Finoit Technologies	IT	1	225000
60	Knoldus Software	IT	1	350000
61	ISOURCe	IT	1	196416
62	Alight Solutions	IT	1	325000
63	SAFETIPIN	IT	1	180000
64	ENS Enterprises Pvt. Ltd.	IT	1	180000
65	Vedicsoft Solutions India Pvt. Ltd.	IT	3	180000
66	Yoma Technologies Pvt Ltd	IT	1	180000
67	Novelvox	IT	2	180000
68	Thinkrace Technology	IT	1	180000
69	Al Futtaim Carillion (Dubai, UAE) - Emrill	ME	3	1200 AED
70	Zep Infratech Ltd	ME	7	180000

71	Aptara Corp	Publishing	7	284724
72	JINDAL BUILDSYS LTD.	IT	7	200000
73	CloudShope Technolgies	IT	6	180000
74	Infogain	IT	2	300000
75	TSS Pvt. Ltd.	IT	2	180000
76	Virtual Studio	IT	3	180000
77	UCertify	Education	1	264000
78	Widely	IT	1	300000
79	Industry Buying	Online	4	200000
80	MPS Ltd.	Digital Cloud	2	180000
81	AthanSys	Health	1	240000
82	Radical Minds Technologies	Outsourcing	16	180000
83	Extramarks Education India Pvt. Ltd	Education	1	300000
84	TPS Infrastructure Ltd.	Mfg	1	180000
85	ZINGHR	Cloud Application	3	240000
86	Data Infovision Pvt Ltd	IT	1	250000
87	Samsung R&D	Telecom	1	684502
88	CNH Industrial (I) Pvt. Ltd.	Mfg	1	180000
89	SBSC	IT	3	240000
90	SSA Infosystems Pvt. Ltd. (IRIS Software)	IT	1	325000
91	Fedex	Logistics	1	400000
92	Shine.com(HT Media)	IT	1	400000
93	IRIS Software	IT	2	325000
94	Mahindra & Mahindra Ltd.	Mfg	1	300000
95	Broadcom	IT	1	400000
96	CresTech Software Systems	IT	1	211526
97	Cube Highways	Infrastructure	2	276000
98	Accenture	Consulting Solution	1	330000
99	Active Learning	Education	1	180000
100	AJNI Industries Pvt. Ltd, Vadodra, Gujrat	Mfg	3	420000
101	ASL Industries Limited, Jamshedpur	Mfg	3	420000
102	Beekay Engineering Corporation Ltd, Bhilai, Chhattisgarh	Mfg & Const	4	400000
103	British Telecom Global Services Pvt. Ltd.	Telecom	2	180000
104	Continental Automotive Brake Systems (I) Private Limited, Gurugram	Mfg	1	180000
105	Delhi Police	Govt	1	As per Govt

106	Dwarka Industries	Mfg	1	336000
107	Edu Assessment Pvt Ltd	Education	4	180000
108	Elentech India Private Limited, Greater Noida	Mfg	1	180000
109	Ericsson	Telecom	1	480000
110	Fiat India Automobiles Pvt Ltd, Pune	Mfg	1	180000
111	GENIUS CONSULTANTS LTD. (Spark Minda Corporation Ltd.)	ME	2	209124
112	Global Auto Land Pvt. Ltd,Pokhara, Nepal	Online	1	480000
113	Globus Infocom Limited	IT	1	180000
114	HINDUSTAN TURBOMACHINERY LIMITED	Mfg	1	180000
115	Hitec Engineering Co.	ME	2	360000
116	lenergizer, sec 60 noida	Online	3	180000
117	Indian Air-Force	Airforce	1	As per Govt
118	Integrated Personnel Services Limited, Mumbai	Consultant	1	180000
119	Intelipower	Mfg	1	180000
120	Krishna Pouch Packaging Machine, Faridabad	Mfg	12	180000
121	Master tools & gauges, Faridabad	Mfg	1	180000
122	Mogli Labs, Noida	Ecommerce	1	180000
123	NTH Hitech India Pvt LTD, Gurugram	Mfg	1	180000
124	OM Metals Infra Projects Ltd.	ME	1	180000
125	PCPS college of Technology& management, Mathura	Education	3	180000
126	Ping Telematics Pvt. Ltd.	Mfg	1	186000
127	R. P. S Engineering Works, Faridabad	Mfg	5	180000
128	SD polytechnic college, Faridabad	Education	3	192000
129	Simplex Castings Ltd., Bhilai	Mfg	4	300000
130	Sumeru Software Solutions Pvt. Ltd	IT	1	550000
131	Systra MVA Consulting India pvt. Ltd.	Infrastructure	1	384000
132	Tech Corp International Strategist	Research	2	240000
133	Ujjala exports, sec 11 noida	Mfg & Exporter	1	180000
134	VALUE AIRCON SERVICES, New Delhi	ME	2	198000
135	Vivo Mobile	Telecom	1	388800
136	Vortex spring components Pvt. Ltd, gurugram	Mfg	1	180000
137	Waves Aircon Pvt. Ltd, Haryana	Mfg	2	186000
138	Wolter Ventilators India Pvt. Ltd	Mfg	6	192000
139	Global Edge Technologies Pvt Ltd, Hyderabad	IT	1	280000
	Total		478	

Placement Status 2017-18 Batch (Non-Technical)

S.No.	Name Of The Company	Sector	No. of placed students	Package
S.N	Company Name	Sector	B.Tech (GU)	Salary (In Rupees)
1	Aaj Enterprise	MBA	3	3.50 LPA
2	Acsius Technolgies Pvt. Ltd.	BJMC/MJMC	1	1.80 LPA
3	Acwits Solutions LLP	BJMC/MJMC	1	1.80 LPA
4	Aditya Birla Capital	MBA	19	4.00 LPA
5	Aditya Birla Health Insurance	BA/BBA/B.COM/B.SC/MBA	3	2.5 LPA
6	Alight Solutions	MBA	1	2.40 LPA
7	ALK Talent Search Llp	MBA	5	2.40 LPA
8	Aurum Investment	MBA/BBA	2	2.6 LPA
9	Avanti Media Ltd.	BJMC/MJMC	1	1.20 LPA
10	Avik Research	MBA	4	1.80 LPA
11	Axis Securities Limited	MBA	11	2.00 LPA
12	Bajaj Allianz	MBA	15	3.50 LPA
13	Barclays	MBA	3	3.87 LPA
14	Capitalvia	MBA	4	3.03 LPA
15	Ceasefire Industries Ltd	MBA	8	4-5.00 LPA
16	Celeb Shine India	BJMC/MJMC	1	1.20 LPA
17	City Star Hospitality And Event	BJMC/MJMC	1	1.20 LPA
18	Clini Experts	M.PHARMA	1	2.16 LPA
19	Clock Soft Solutions	MBA	1	3.00 LPA
20	Club Mahindra	MBA /BBA / BCOM	1	2.50 LPA
21	Concentrix	MBA,BBA,B.COM,BMS	31	2.45 LPA
22	Cube Highway	MBA	1	2.77 LPA
23	Deal4loan	MBA	8	3.50 LPA
24	Delhi Chilli	BJMC/MJMC	1	1.80 LPA
25	Delhi Chilli	MBA	17	3.00 LPA
26	Delhi Event Organizer Pvt. Ltd.	BJMC/MJMC	1	1.56 LPA
27	Delhi Institute Of Digital Marketing	MBA	6	3.00 LPA
28	Dell International Services	BBA/BMS/BCOM	2	4.15 LPA
29	Droom	MBA	4	3.40 LPA

30	E2y Proptech Pvt. Ltd.	BJMC/MJMC	1	1.44 LPA
31	Ece Industries	MBA	7	3.00 TO 3.50 LPA
32	Ecentric Solutions Private Limited	M.PHARMA	1	2.64 LPA
33	Elite Wealth Advisors Ltd.	MBA	7	2.30 LPA
34	Ethos Reliable Services Pvt. Ltd.	BJMC/MJMC	1	1.80 LPA
35	Fonebell Communications Pvt. Ltd.	BJMC/MJMC	1	2.40 LPA
36	Fortis Hospital	BSC NURSING	2	2.40 LPA
37	Genpact	MBA/BBA/ BCOM	7	2.00 LPA
38	Geospatial Media & Communications Pvt. Ltd.	BJMC/MJMC	1	1.44 LPA
39	Gigluce Music Private Limited	MBA	1	2.40 LPA
40	Glamour Mantra	BJMC/MJMC	1	1.20 LPA
41	Globus Retail	MBA	2	2.60 LPA
42	Granada Services Pvt. Ltd.	BJMC/MJMC	1	3.96 LPA
43	Home Credit	MBA	2	4.20 LPA
44	Honey Enterprises	BJMC/MJMC	1	1.32 LPA
45	Icici Securities	MBA	8	3.50 LPA
46	Ids Infotech (Medical Scribe)	B.PHARM/M. PHARM/B.SC FORENSIC	3	3.49 LPA
47	Indiamart	MBA,B.Com, BBA, BA,MA, B.Sc	1	2.52 LPA
48	Innodata	MSC CHEMISTRY	3	2.40 LPA
49	Integreon Managed Solutions	LLB/LLM/ MBA	17	3.04 LPA
50	Integreon Managed Solutions	LLB/LLM/ BBALLB/ BALLB	2	4.50 LPA
51	Investors Clinic	MBA	20	3.00 LPA
52	Jaro Education	MBA	8	6.66 LPA
53	Just Dial Limited	BJMC/MJMC	1	3.06 LPA
54	Just Dial Limited	BJMC/MJMC	1	3.08 LPA
55	Justdial	MBA	42	3.08 LPA
56	Kips India Pvt. Ltd	MBA	2	2.40 LPA
57	Liberty Videocon General Insurance	MBA	2	4.64 LPA
58	Lingaya's Vidyapeeth	M.PHARMA	1	1.80 LPA
59	Mana Life Care	MBA,BBA,B.SC	2	2.40 LPA
60	Mana Medical	LAW	3	2.40 LPA

61	Mana Medical	MBA , SCIENCE STUDIES	10	2.40 LPA
62	Manik It & Infrastructure Services Pvt. Ltd.	BJMC/MJMC	1	1.92 LPA
63	Mankind	M.PHARMA	1	1.80 LPA
64	Media Institute Of Information Technology	BJMC/MJMC	1	1.20 LPA
65	Mediazotic	MBA	2	1.80 LPA
66	Meritnation	MBA	3	3.00 LPA
67	Minda Distribution And Services Ltd.	MBA	1	3.50 LPA
68	Mobikwik	MBA/BBA/ BCOM/BA/ BJMC/MJMC/ BSC	2	2.50 LPA
69	Mobilotte	MBA	4	3.00 LPA
70	Mohit Trading Co.	BJMC/MJMC	1	2.64 LPA
71	Naukri	MBA	8	3.50 LPA
72	Naukri.com (Fast Forwarding)	MBA	9	2.44 LPA
73	New Age Techsci Research Pvt. Ltd.	MBA	1	3.44 LPA
74	News World India	BJMC/MJMC	2	1.20 LPA
75	News World India	BJMC/MJMC	1	1.20 LPA
76	Next Wave	M.PHARMA	1	1.80 LPA
77	Nivesh.com	MBA	5	3.00 - 4.00 LPA
78	Nivesh.com	MBA,BBA,B. COM,BMS	5	4.00-6.00 LPA
79	Noida City News	BJMC/MJMC	1	1.44 LPA
80	Nuevo Technologies	BJMC/MJMC	1	2.40 LPA
81	Nysaa Retail Private Limited	MBA	2	2.20 LPA
82	OMD	MBA	5	3.00 LPA
83	Omics International	MBA	11	3.00 LPA
84	ONS Solutions	MBA	6	3.00 LPA
85	Opal Researc & Analytical Services	BJMC/MJMC	1	1.20 LPA
86	Owbro Solutions	BJMC/MJMC	1	1.20 LPA
87	Oyo Rooms	MBA	1	4.50 LPA
88	Party Planners	BJMC/MJMC	1	1.20 LPA
89	Paytm Payments Bank	MBA	4	3.50 LPA
90	Peachree Home Accents Pvt. Ltd	BBA/BMS/ BCOM	1	1.80 LPA
91	People Observer News Paper	BJMC/MJMC	1	1.20 LPA
92	People Scout	BBA,BMS,B. COM	13	2.55 LPA

93	Pioneer Solutions	MBA	3	1.80 LPA
94	Policy Bazaar	BJMC/MJMC	1	1.20 LPA
95	Policy Bazaar	MBA	14	2.78 LPA
96	Prasar Bharati	BJMC/MJMC	1	1.20 LPA
97	Pricewaterhousecoopers Private Limited (PWC)	ALL	5	2.40 LPA
98	Rare Bytes Production	BJMC/MJMC	1	1.44 LPA
99	Reconnect Energy	MBA	1	2.00 LPA
100	Red Square Restaurant & Bar Pvt. Ltd.	BJMC/MJMC	1	1.20 LPA
101	RR Investors Capital Services Pvt. Ltd.	MBA	1	3.00 LPA
102	Rupee Makers	MBA	3	3.00 LPA
103	Sahil Advertising	BJMC/MJMC	1	2.16 LPA
104	Sam Brand Brewers Llp	BJMC/MJMC	1	1.20 LPA
105	Shekhars Events & Entertainment Pvt. Ltd.	BJMC/MJMC	1	1.20 LPA
106	Shine Internet Pvt. Ltd.	BJMC/MJMC	1	1.20 LPA
107	Shree Baijnath Advertising Agency	BJMC/MJMC	1	1.80 LPA
108	Shree Kunj Bihariji Infratech	BJMC/MJMC	1	1.20 LPA
109	Snva Ventures	MBA	1	4.20 LPA
110	Spectrum Talent Management	MBA /BBA / BMS	2	2.50 LPA
111	TCI	BJMC/MJMC	2	4:00-6:00 LPA
112	Think Money	MBA	9	3.00 LPA
113	Tommy Hilfiger	MBA, BBA,BMS	7	3.00 LPA, 2.50 LPA
114	Trading Bells	MBA/BBA/ BMS/B.COM	25	3.45 LPA
115	Transport Corporation Of India	MBA	6	3.15 LPA
116	Transsion	MBA	1	3.00 LPA
117	Troikaa Pharmaceutical Ltd	B.PHARM/ M.PHARM / BSC/MSC	3	2.40 LPA
118	Ultra Tech Cement	MBA	1	5.00 LPA
119	Urban Ladder	MBA	1	4.0 LPA
120	Usma Social Media Archetecture Pvt. Ltd.	BJMC/MJMC	1	1.92 LPA
121	V2 Retail	MBA	6	2.40 LPA
122	V2 Retail	MBA	6	2.5 LPA
123	Vagmine Education	MBA	4	4.32 LPA
124	Vfn Group	MBA	2	2.40 LPA
125	Vfn Group	MBA, B.COM	7	3.00 LPA

126	Vivo	MBA/BBA/BMS	1	2.72 LPA
127	Walk On Vacations	BJMC/MJMC	1	1.80 LPA
128	Wisdom Cine Arts Pvt. Ltd.	BJMC/MJMC	1	1.20 LPA
129	Wizcarft International Entertainment Pvt. Ltd.	BJMC/MJMC	1	2.60 LPA
130	Women Innovation Entrepreneurship Foundation	BJMC/MJMC	1	1.20 LPA
131	Wwf	MBA	27	2.40 LPA
132	Xdbs Corporation	BJMC/MJMC	1	2.40 LPA
133	Zee Media Corporation Ltd.	BJMC/MJMC	1	1.20 LPA
134	Zomato	MBA/BBA/ BCOM	1	4.00 LPA



 **GALGOTIAS
UNIVERSITY**

(Under the Uttar Pradesh Private Universities Act No.12 of 2019)

Plot No. 2, Sector -17-A, Yamuna Expressway,
Greater Noida. Gautam Buddh Nagar, Uttar Pradesh- 203201 (India)